

Product Code 940004



One Dream Texture Trendsetting textures for your stylish home

PRODUCT FEATURES AND BENEFITS*



3D Pattern

Brilliant patterns with a three-dimensional feel.



Smooth Texture

A smoother texture not only enhances aesthetics but also ensures gentleness on your skin.



Low VOC

Toxin-free spaces with low VOC.

PRODUCT DETAILS



MATT FINISH

COVERAGE

Only on non-porous surface with a correct surface preparation using WB/ST primers and with correct deposition.



**8-10 Sq.ft./kg for 2 coats*
depending of the final effect.**

*Actual coverage may change from the mentioned coverage depending on the method of application and surface condition.



**100+
SHADES OFFERED***

AVAILABLE PACKS



1 AVAILABLE BASES
Tintable White

DIRECTIONS FOR USE

PRE-PAINTING STEPS



1. Plaster:

New masonry surfaces must be allowed to cure completely. The recommended curing period is 28 days for new masonry surfaces while ensuring they are water-cured daily.



2. Treating Dampness:

The maximum moisture content for any surface that is to be painted should be below 16%. Post-checking for dampness, appropriate treatment of the damp surface should be carried out to eliminate the cause of the dampness.



3. Cleaning:

The surface should be cleaned for any loose paint, dust, or grease. Growth of fungus, algae, or moss should be removed by wire brushing and water or bio-wash. When the underlying surface exhibits chalkiness, please use water to cure for some time and then apply a layer of Birla Opus One Pro Smooth Primer before topcoat application.



4. Filling of Cracks:

For filling cracks up to 5mm width and 3mm depth on the surface use Crack Filler Paste. For cracks above 3mm, it is recommended to use a mixture of cement and river sand in the ratio of 1:4 for plastering.

PAINTING STEPS



1. Sanding:

Allow the freshly plastered surface to cure completely. Remove loose paint, dust/dirt etc. with sandpaper no. 180 and then wipe and clean the surface



2. Primer Application:

Apply one coat of Birla Opus One Pro Smooth Primer/equivalent Birla White Primer. The primer should be mixed with water in 1:1 ratio. After the application ensure a drying time of 6 hours.



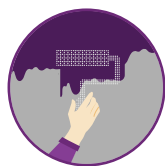
3. Putty Application:

Smoothen the surface by filling undulations with 2 coats of Birla Opus One Pro Smooth Putty/equivalent Birla White Putty. Allow it to dry for 4-6 hours between successive coats. Apply third coat of putty if required and then sand with sandpaper no. 320 and wipe the surface.



4. Primer Application:

Apply 1 coat of Birla Opus One Pro Smooth Primer/equivalent Birla White Primer and allow it to dry for 4-6 hours and then sand the surface using sand paper no. 400 post which wiping the surface will be required.



5. Topcoat Application:

Apply 3 coats of Birla Opus One Dream Texture using a recommended tool to achieve the desired effect. Use the recommended top coat for final output.

POST-PAINTING STEPS

1. Ensure dry dust cleaning at regular intervals.

2. While cleaning, wipe gently without intense pressure.

3. Give 2 weeks drying time post application of paint before wet cleaning the wall.

4. Use a 5% detergent solution to clean stains from the wall using a soft cotton cloth or sponge. Stains are best removed within 4 hours.

TECHNICAL INFORMATION



Drying Time

Surface dry time 30 mins**
**May vary according to temperature & humidity.
Recoating time: 3-5 hours



Low VOC

Volatile organic compound (VOC) level in base: <100 gm/l



Stability of Thinned Paint

To be used within 36 hours.



Shelf life

36 months from the date of manufacturing



Sheen Level

<5 at 60 degree GH



Flash Point

Flash point IS101/1987 Part 1, Sec 6: NA



Storage

Store in well-ventilated area away from direct sunlight and heat source.

SAFETY ASPECTS

- Do not apply when ambient temperature is below 10°C or might drop to a level below this within 4 hours of application
- Do not apply if humidity > 90%
- Wear dust mask during application, sanding, and cleanup.
- Do not over-thin or over-extend the brush.
- Stir well and strain before use.
- New plaster should be allowed to cure for minimum 28 days.
- Ensure adequate ventilation during application and drying.

- Avoid prolonged or repeated contact with eyes. In case of contact with eyes, rinse immediately with a plenty amount of water, and seek medical advice.
- Refrain from disposing leftover paint down the drain or in water bodies.
- Lead content does not exceed more than 90 parts per million.
- No added Mercury, Chromium, and Arsenic compounds.

#TERMS AND CONDITIONS

Coverage Values

- Surface preparation & painting steps should be followed as recommended in Product Information Sheet (PIS)

Low VOC

- As per internal test method and conditions

Shades Offered

- Subject to availability. Please consult your nearest authorised dealer to confirm on the shade availability.

For further details, please reach out to our customer care via either of the following methods: Contact number: 1800-120-1234, Email ID: opuscare@adityabirla.com